

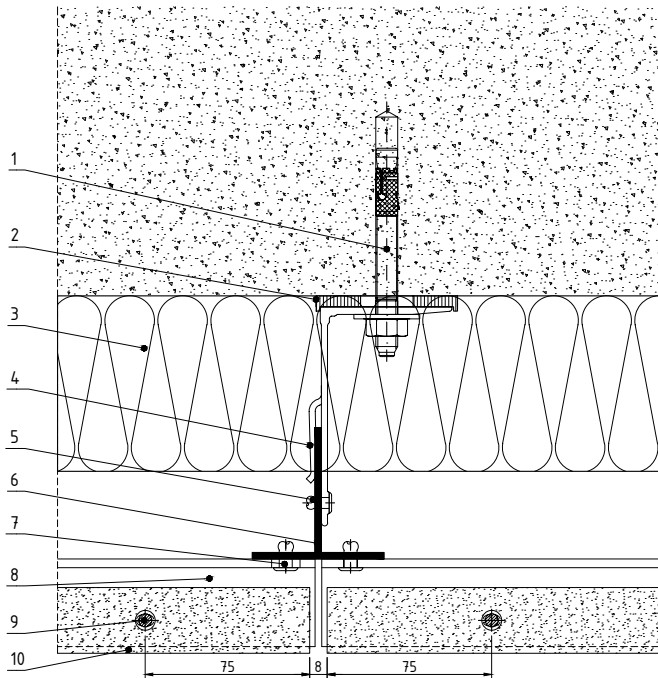


FORTE PINS

FORTE PINS  
VENTILATED  
FAÇADE SYSTEM

ETEM

# DESIGNED FOR MOUNTING HEAVY FAÇADE MATERIALS



## MAIN ADVANTAGES

A continuous façade with no visible fixing elements

Big variety of designs for the façade materials

Possibility for using facade materials with thickness more than 30 mm

Special designed system for handling extreme loads

Fast and simple installation

# FORTE PINS

VENTILATED FAÇADE SYSTEM

## DESIGN

DESIGNED ON THE PRINCIPLE OF NATURAL VENTILATION, ACHIEVED THROUGH THE CREATION OF A 4-8 CM ZONE BETWEEN THE FAÇADE MATERIAL AND THE THERMAL INSULATION

## HIGH QUALITY PRODUCT

SPECIAL DEVELOPED SYSTEM TO ENSURE THE SAFE AND EFFICIENT INSTALLATION OF HEAVY FAÇADE MATERIALS, USING STAINLESS STEEL PINS

1. anchor
2. thermo pad
3. thermal insulation
4. fixing bracket 100/90 mm
5. rivet 5x12
6. main supporting profile
7. rivet 6x12
8. supporting horizontal profile
9. stainless steel pin
10. stone
11. thermal pad
12. fixing bracket 100/160 mm
13. plug

## DETAILS

Use of façade materials with weight up to 90 kg/sq.m

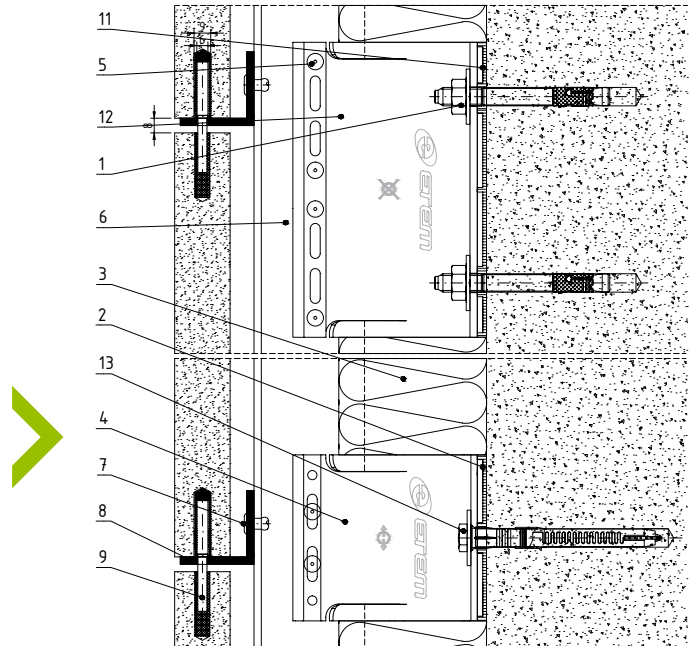
Natural ventilation

High energy efficiency

High level of sound insulation and water tightness

Specially designed profiles and accessories for handling extreme static loads

Individually developed stainless steel pins



[etem.com](http://etem.com)