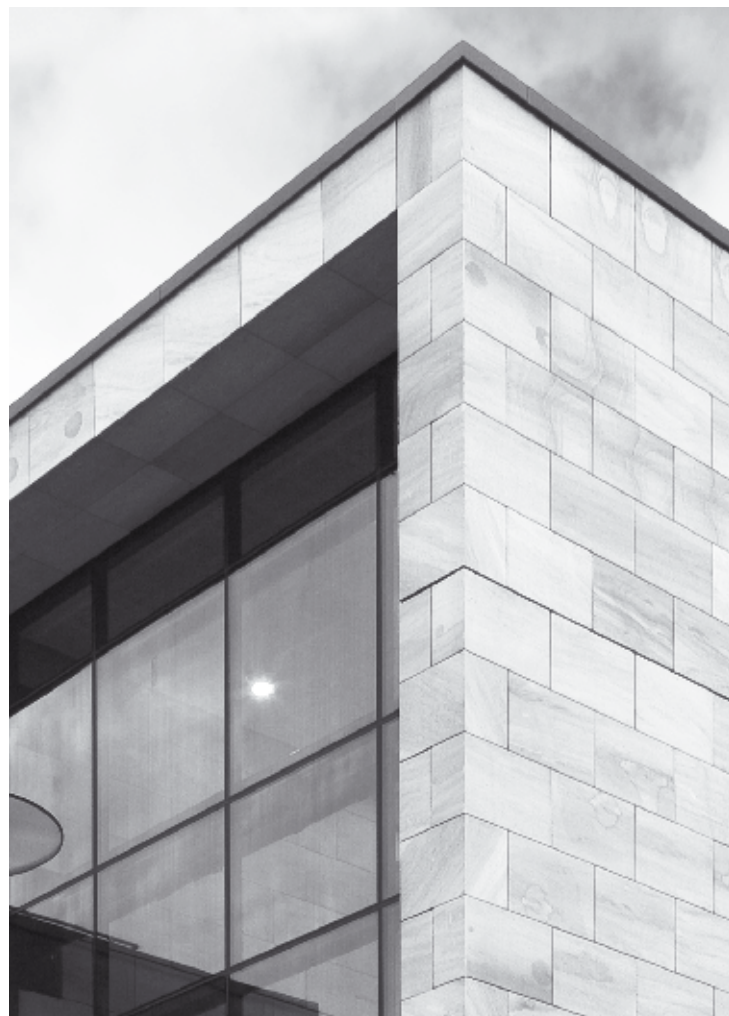
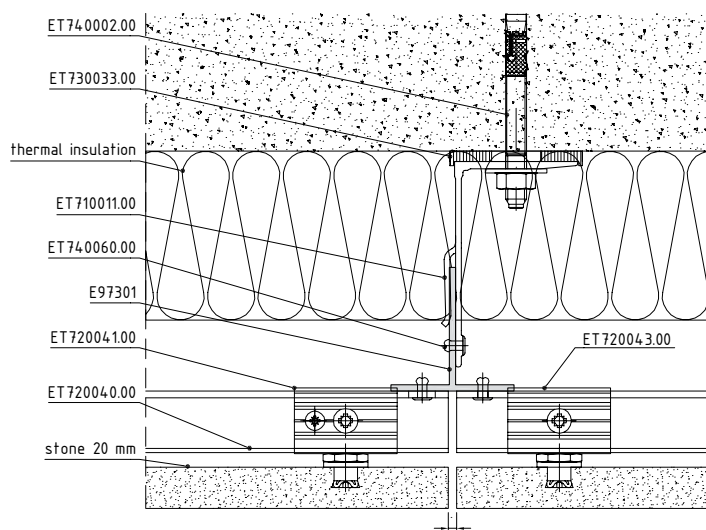


**FORTE LIGHT**  
VENTILATED FAÇADE SYSTEM

**ETEM**

# DESIGNED FOR “INVISIBLE” FIXING OF THIN AND FLAT FAÇADE MATERIALS



## MAIN ADVANTAGES

A continuous façade with no visible fixing elements

Big variety of facade panels, sizes and designs

Highest level of security when fixing the plates due to the Fischer and Keil anchor system

Possibility to use cladding materials with a thickness from 8 mm up to 25 mm

Fast and simple installation

Possibility for precise alignment of every façade material

# FORTE LIGHT

VENTILATED FAÇADE SYSTEM

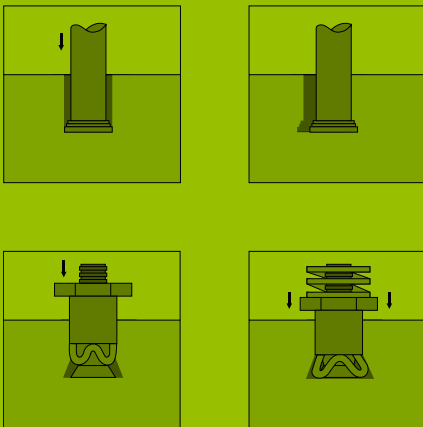
## DETAILS

### DESIGN

FORTE LIGHT VENTILATED SYSTEM USES FISHER® FIXING ANCHORS TO SECURE THE CONNECTION BETWEEN THE FAÇADE MATERIAL AND THE MAIN LOAD BEARING STRUCTURE OF THE SYSTEM.

THE UNIQUE UNDERCUT TECHNOLOGY FOR DRILLING AND MOUNTING OF THE ANCHOR ON THE REAR (SECRET FIX) SECTION OF THE FAÇADE MATERIAL ALLOWS FOR.

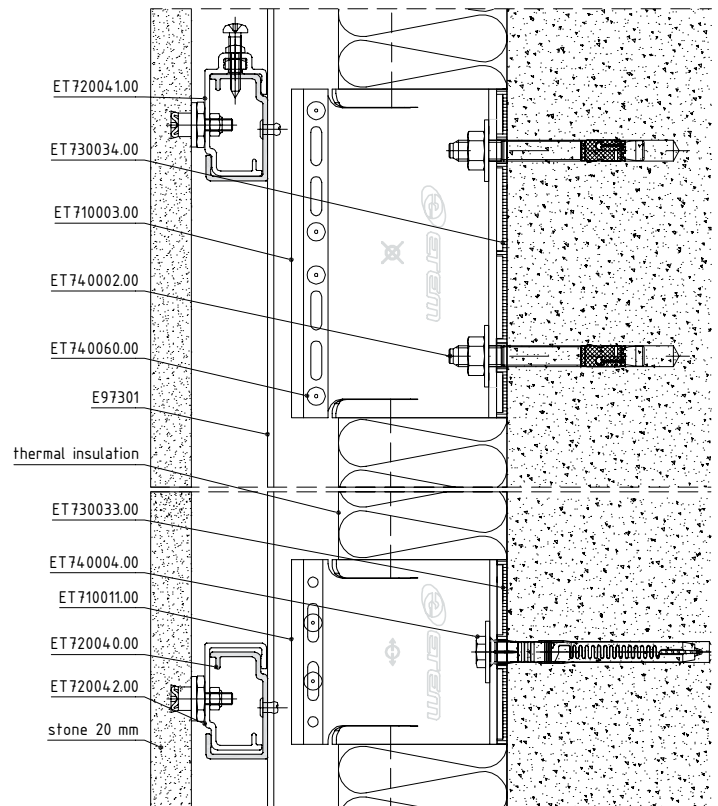
Fastening of "undercut" anchors into the façade tile



Use of façade materials with a thickness less than 25 mm

50% greater load in comparison to standard methods of hanging heavy façade materials (marble, granite)

73% reduction in internal stresses in the panel



[etem.com](http://etem.com)